

# Pairing Your S800 to Your Mobile Device

This document reviews how to pair your S800 to your mobile device for when scanning in the PestPac Mobile app.

For additional resources, please be sure to visit [PestPac University](#).

**Disclaimer:** The app described below has been developed by Socket Mobile for the pairing of their scanners to a mobile device; this app is not owned or maintained by WorkWave.

## Downloading the Application

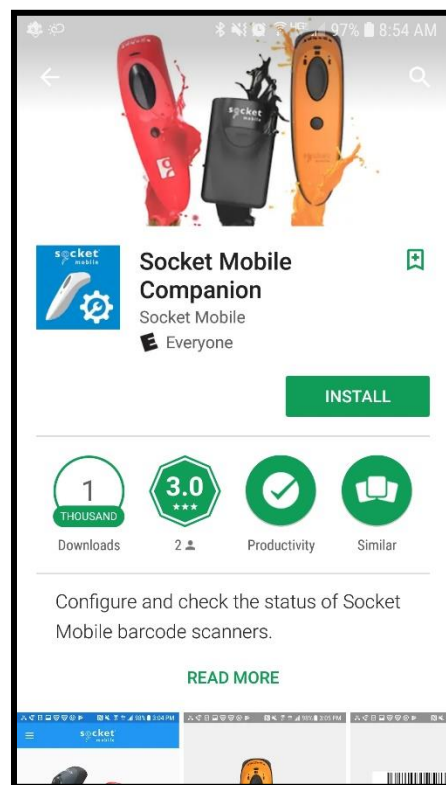
To pair your S800 to your mobile device, you will need to download the application to your mobile device. Note that this application can be found in both the Google Play and iTunes Stores for use on the Android and iOS operating systems.

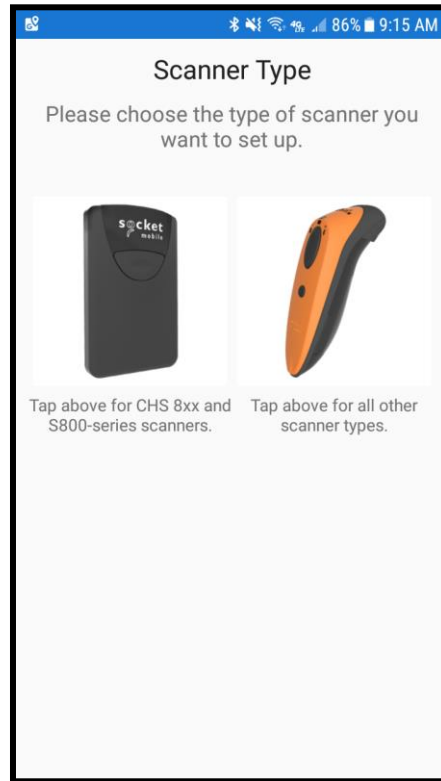
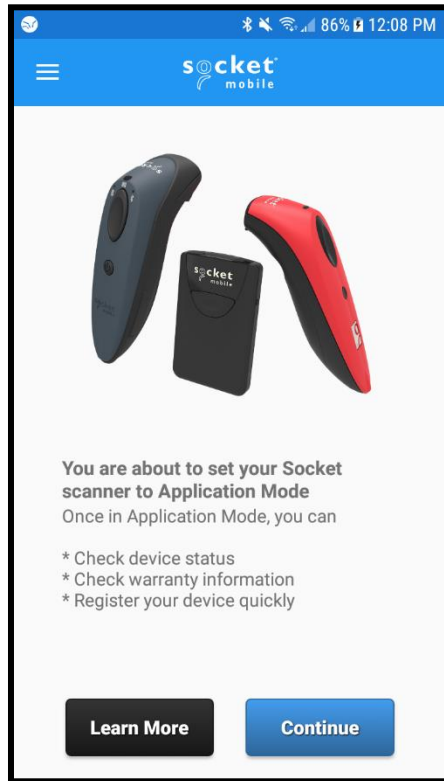
Search for *Socket Mobile Companion* and confirm that the app is the correct one by verifying that the app was developed by Socket Mobile.

## Running the Application

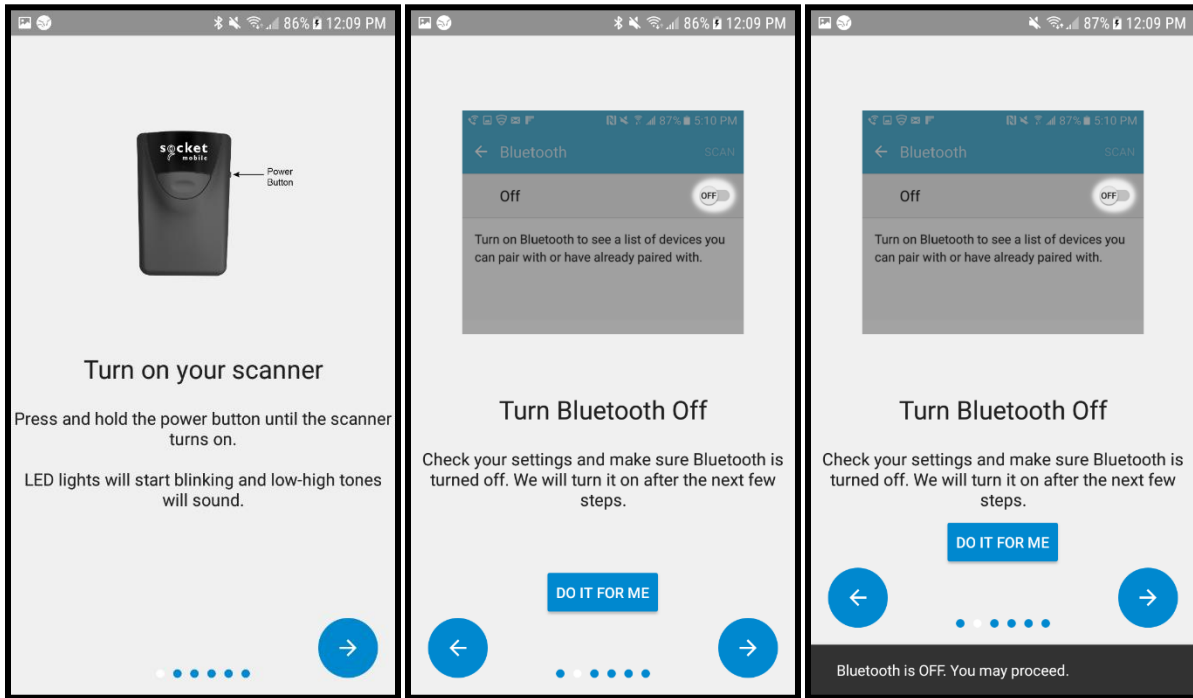
Once installed, complete the following steps:

1. Launch the app by tapping the icon on your mobile device or in your Installed Apps list.
2. When launched, the initial setup screen appears; tap *Continue* and select your scanner.

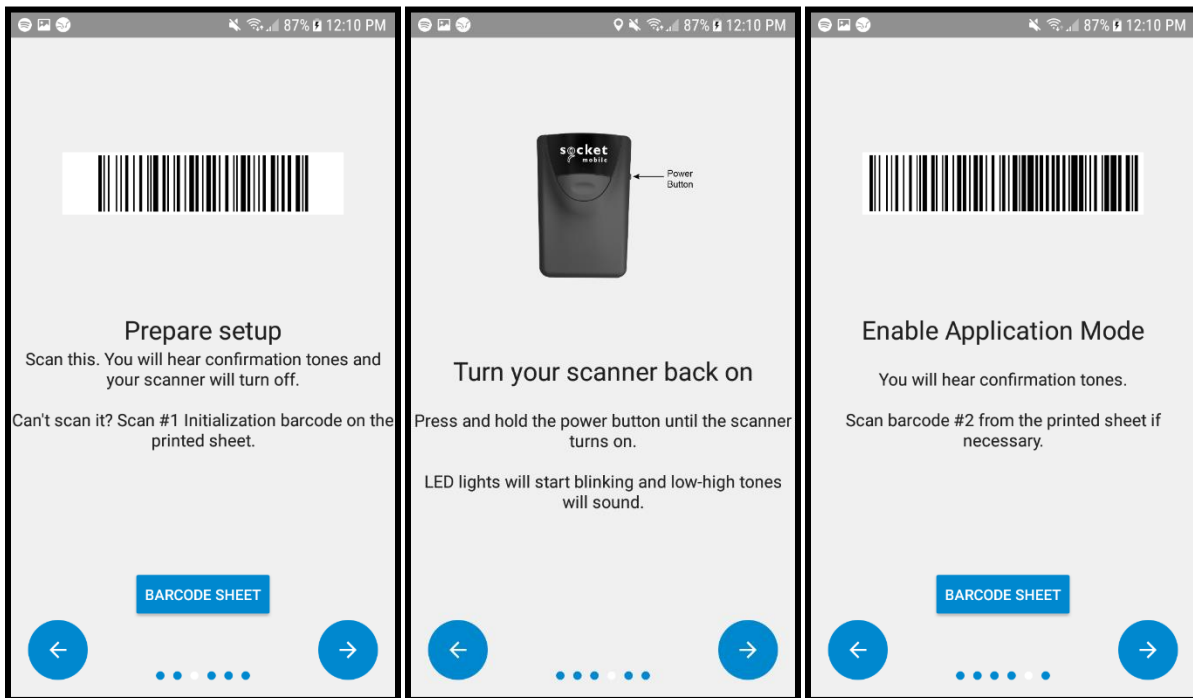




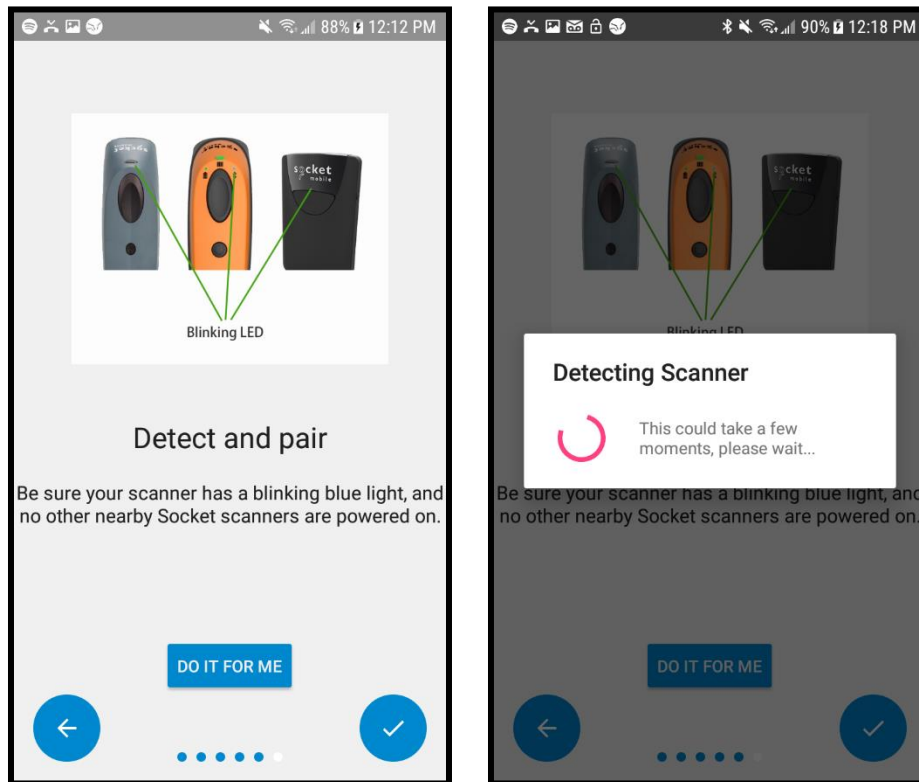
3. Follow the directions to turn on your scanner. You will be prompted to disable Bluetooth if it is enabled. You will be able to confirm it is disabled via the activity bar at the bottom of the screen.
  - a. Android provides the *DO IT FOR ME* button.
  - b. iOS provides the option to pause here in the process to disable Bluetooth manually.



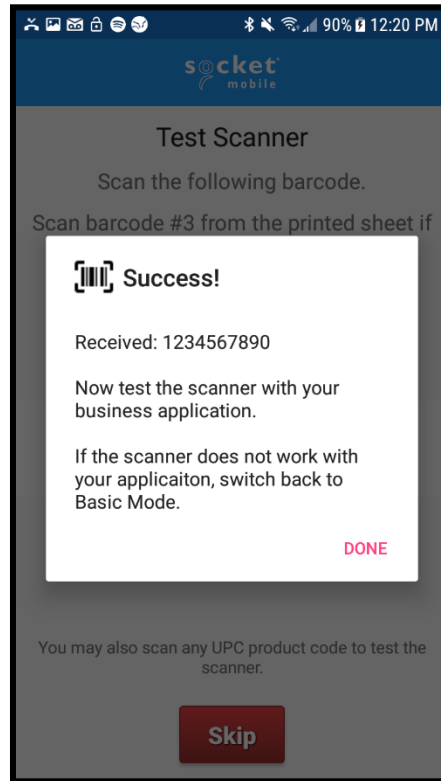
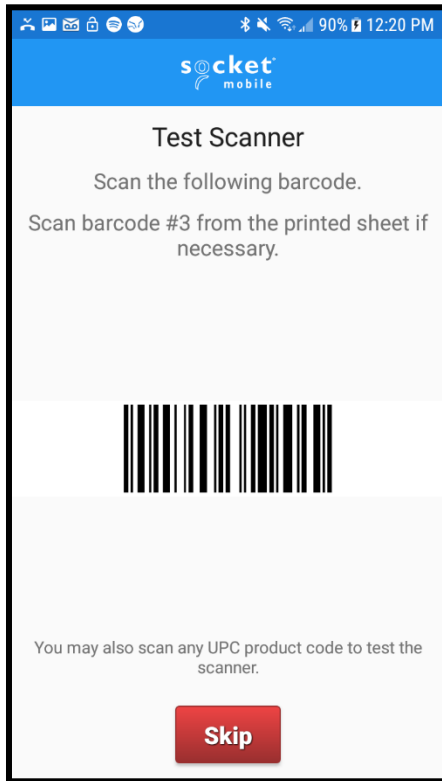
4. Follow the prompts to scan the barcode (after which your scanner will turn off), turn on the scanner again, and scan the second barcode presented.



5. To have the app detect and pair your scanner, ensure no other scanners are powered on, and tap *DO IT FOR ME*. Note that detecting and pairing can take a moment.



6. Once paired (i.e., allowed to tap the arrow on the lower-right to the next step), use the scanner on the test barcode; you will receive a confirmation popup when the devices are paired correctly.



7. You will now see the scanner paired when tapping the menu in the upper-left of the Companion app.

To make sure that the scanner pairs with the mobile app, turn the scanner off, wait 20 seconds, then turn the scanner back on. Test scan a device to make sure that the scanner paired correctly with the mobile app.

REMEMBER: For additional setup, training, and usage resources, including live webinars and a robust video library, please visit [PestPac University](#).

